

 **REAL-EL**

**OPERATION MANUAL**



**SOUNDBAR  
SPEAKER SYSTEM  
S-180**

## ***Congratulations on your purchase of the REAL-EL speaker system!***

### **COPYRIGHT**

© 2021. ENEL GROUP OU.

This Manual and information contained in are copyrighted. All rights reserved.

### **TRADEMARKS**

All trademarks are the property of their legal holders.

### **CONTENTS**

<b>1. BUYER RECOMMENDATIONS</b> .....	<b>1</b>
<b>2. PACKAGE CONTENTS</b> .....	<b>1</b>
<b>3. SAFETY PRECAUTIONS</b> .....	<b>2</b>
<b>4. PREPARATION AND OPERATION</b> .....	<b>3</b>
<b>5. TROUBLESHOOTING</b> .....	<b>3</b>
<b>6. TECHNICAL SPECIFICATIONS</b> .....	<b>3</b>

### **1. BUYER RECOMMENDATIONS**

- Unpack the device carefully. Make sure there are no accessories left in the box. Check up the device for damage; if the product was damaged during transportation, address the firm, which carried out the delivery; if the product functions incorrectly, address the dealer at once.
- Check up the package contents and availability of the warranty card. Make sure the warranty card has a shop stamp, a legible signature or the seller's stamp and purchase date, and the goods number corresponds to that in the warranty card. Remember: in case of warranty card loss or discrepancy of numbers you forfeit the right for warranty repairs.
- Do not switch on the speaker system immediately after you bring it into a room from environment with negative temperature! After unpacking, the speaker system should be kept in conditions of room temperature for at least 4 hours.
- Before installing and using the speaker system, read this Manual carefully and keep it for future reference.

### **2. PACKAGE CONTENTS**

- Soundbar Speaker System – 1 pc
- User manual – 1 pc
- Warranty card – 1 pc

### 3. SAFETY PRECAUTIONS

- Do not open the Soundbar and do not perform repairs by yourself. Service and repairs should be performed only by qualified specialists at authorized service centers. The list of authorized service centers is on [www.real-el.com](http://www.real-el.com)
- Make sure that foreign objects do not get inside the holes of the soundbar .
- Protect the soundbar from high humidity, water and dust.
- Protect the soundbar from heating: do not place it closer than 1 m from a heat source. Do not expose it to direct sunlight.
- Do not use any chemical agents for cleaning. Clean it with dry soft cloth only.
- If the soundbar does not operate, unplug USB cable it and address your dealer.

### SPECIAL FEATURES

- RGB backlit with touch control
- High quality speaker driver
- Volume control

### Control panels

- ① Bult-in signal cable
- ② Bult-in USB power cable
- ③ Switching backlight ON/OFF button
- ④ Power button, Volume control button

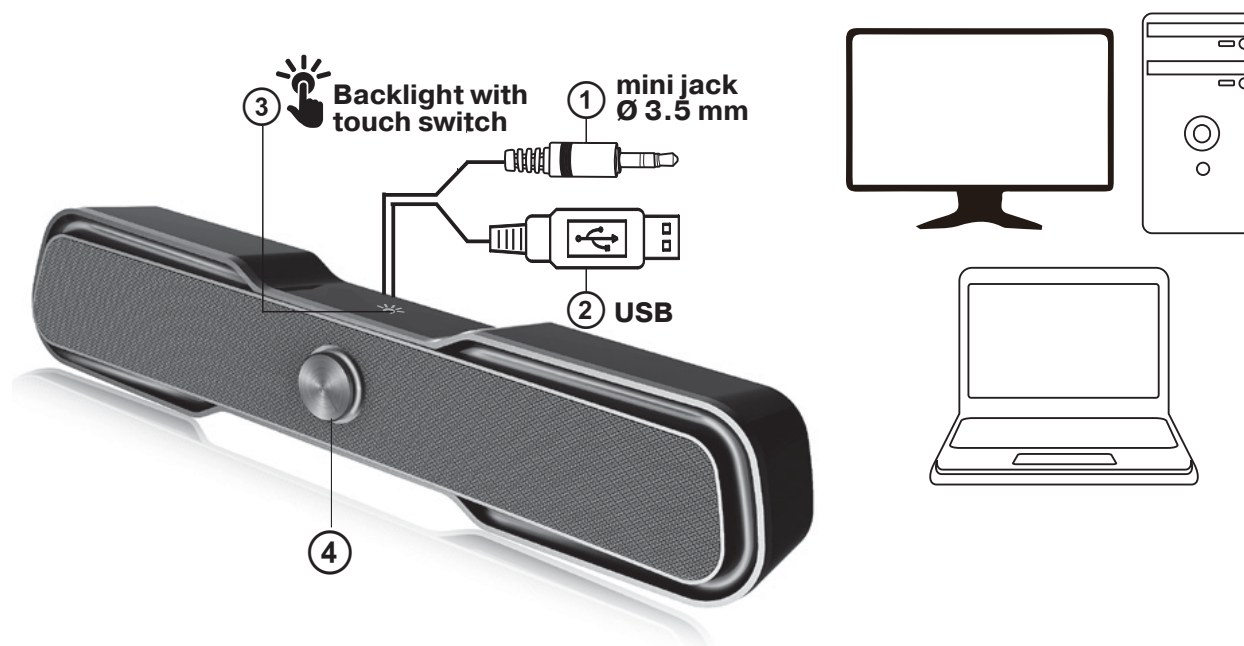


Fig. 1. Connection diagram

#### 4. PREPARATION AND OPERATION

Soundbar can be connected to USB port on your computer or laptop Plug the USB cable to a USB port on your computer, laptop or separate USB power supply (see connection diagram, Fig. 1). Plug signal cable mini jack into PC sound card or to audio output of the audio source.

#### 5. TROUBLESHOOTING

Problem	Cause	Solution
The soundbar does not turn on.	The soundbar isn't connected to a USB port.	Check the connection.
No sound or sound of speakers is too quiet.	Volume level is set at its minimum value.	Adjust the volume control knob.
	Improperly connected audio source.	Connect audio sources correctly.
Distortion of sound.	Large amplitude of the input signal.	Turn down the source volume and the soundbar volume.

*Attention! If none of the above methods can solve the problem, please seek professional advice at your nearest service center. Never attempt to repair the product yourself.*

#### 6. TECHNICAL SPECIFICATIONS

Parameter	Value measurement unit
Output power (RMS)	6 (2 × 3) W
Frequency range	150 – 20.000 Hz
Speaker dimensions	2 × Ø 45 mm
Connection	mini-jack Ø 3.5 mm
Power supply	USB / 5V DC
Case material	ABS plastic
Dimensions (one speaker)	440 × 83 × 88 mm
Weight	0.785 kg

##### Notes:

- Technical specifications given in this table are supplemental information and cannot give occasion to claims.
- Technical specifications and package contents are subject to change without notice due to the improvement of REAL-EL production.



Manufacturer: ENEL GROUP OU, Harju maakond, Rae vald, Jüri alevik, Aruküla tee 55a, 75301, Estonia.  
® Registered Trademark of ENEL GROUP OU. Estonia.